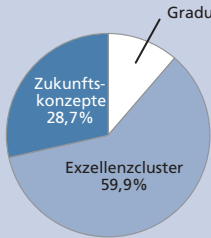


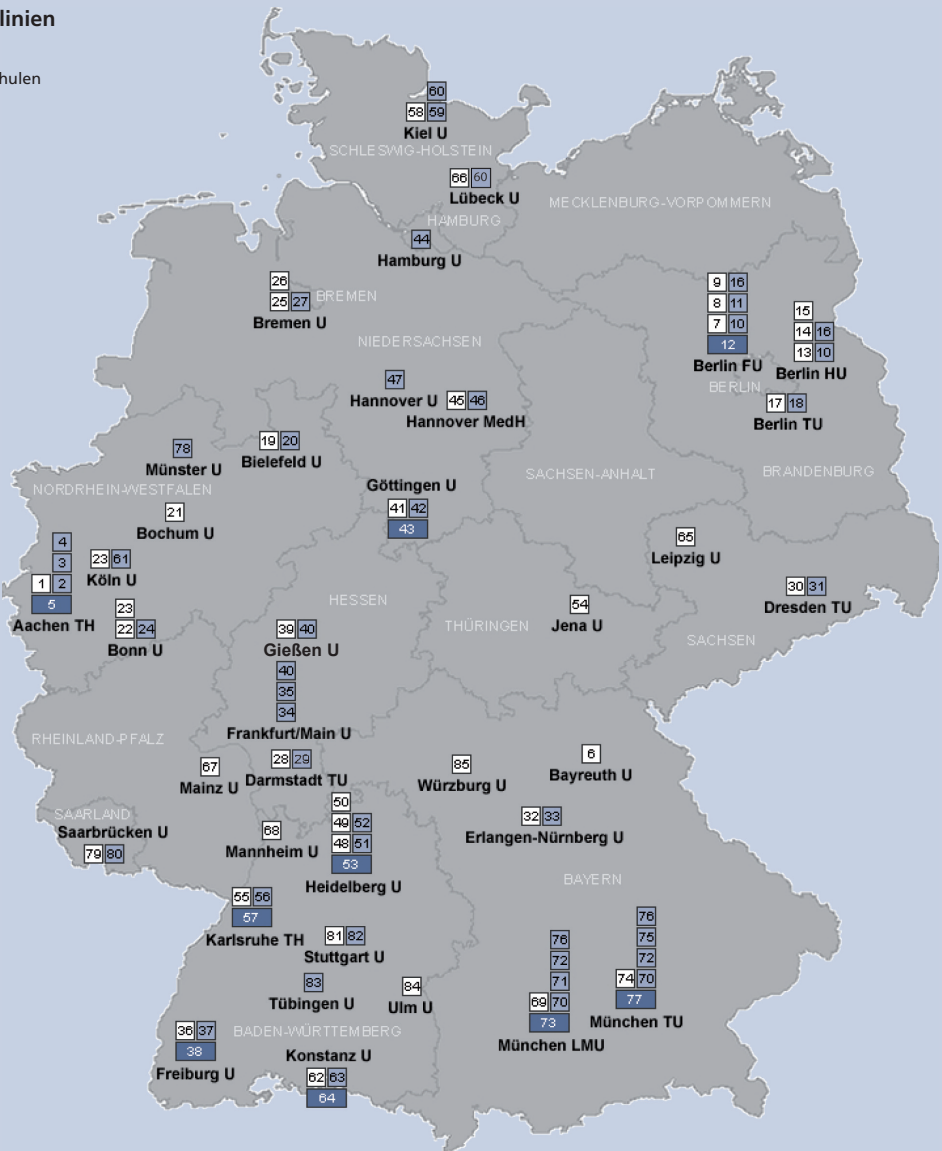
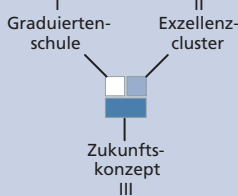
Förderentscheidungen in der Exzellenzinitiative

Bewilligungen nach Förderlinien



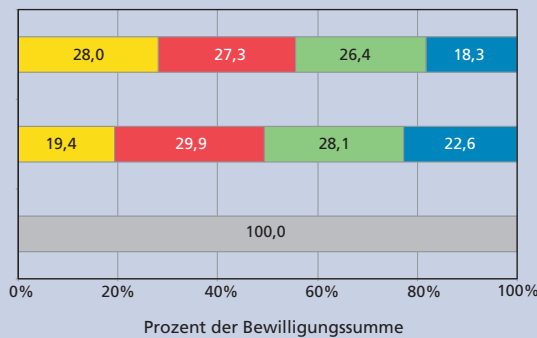
Basis: 1.181,5 Mio. € für drei Jahre

- I. Förderlinie: Graduiertenschulen (GSC) zur Förderung des wissenschaftlichen Nachwuchses
- II. Förderlinie: Exzellenzcluster (EXC) zur Förderung der Spitzenforschung
- III. Förderlinie: Zukunftskonzepte (ZUK) zum projektbezogenen Ausbau der universitären Spitzenforschung



Bewilligungen nach Wissenschaftsbereichen je Förderlinie

- Graduiertenschulen
Basis: 134,2 Mio. € für insg. 39 GSC
- Exzellenzcluster
Basis: 707,9 Mio. € für insg. 37 EXC
- Zukunftskonzepte
Basis: 339,4 Mio. € für insg. 9 ZUK



- Geistes- und Sozialwissenschaften (11 GSC und 6 EXC)
- Lebenswissenschaften (12 GSC und 12 EXC)
- Naturwissenschaften (8 GSC und 10 EXC)
- Ingenieurwissenschaften (6 GSC und 9 EXC)
- Hochschulweit (9 ZUK, 2 GSC, keine EXC)

Lesehinweise:
Die fachliche Zuordnung der Programme erfolgt hier über den primär zugeordneten Wissenschaftsbereich. Dabei ist zu beachten, dass alle ZUK und 2 GSC hochschulweit ausgerichtet sind. Die Bewilligungssummen bei GSC und EXC werden dagegen vollständig fachlich differenziert betrachtet.

Die bewilligten Projekte in der Exzellenzinitiative (in alphabetischer Reihenfolge der jeweiligen Sprecherhochschulen)

- | | | | |
|---------------------------------------------------------------------------------------------------------------------------------|-----------------------------------------------------------------------------------------------------------------------|-----------------------------------------------------------------------------------------------------------------|-----------------------------------------------------------------------------------------------------------|
| 1 Aachen TH
Aachen Institute for Advanced Studies in Computational Engineering Science | 23 Bonn U zusammen mit Köln U*
Bonn-Cologne Graduate School of Physics and Astronomy | 45 Hannover MedH
Hannover Biomedical Research School | 67 Mainz U
Materials Science in Mainz |
| 2 Aachen TH
Ultra High-Speed Mobile Information and Communication | 24 Bonn U
Mathematics: Foundations, Models, Applications | 46 Hannover MedH
From Regenerative Biology to Reconstructive Therapy | 68 Mannheim U
Empirical and Quantitative Methods in the Economic and Social Sciences |
| 3 Aachen TH
Integrative Production Technology for High-Wage Countries | 25 Bremen U
Global Change in the Marine Realm | 47 Hannover U
Centre for Quantum Engineering and Space-Time Research | 69 München LMU
Graduate School of Systemic Neurosciences |
| 4 Aachen TH
Tailor-Made Fuels from Biomass | 26 Bremen U
Bremen International Graduate School of Social Sciences | 48 Heidelberg U
Heidelberg Graduate School of Fundamental Physics | 70 München LMU zusammen mit München TU*
Nanosystems Initiative Munich |
| 5 Aachen TH
RWTH 2020: Meeting Global Challenges | 27 Bremen U
The Ocean in the Earth System | 49 Heidelberg U
Heidelberg Graduate School of Mathematical and Computational Methods for the Sciences | 71 München LMU
Munich-Centre for Integrated Protein Science |
| 6 Bayreuth U
Bayreuth International Graduate School of African Studies | 28 Darmstadt TU
Graduate School of Computational Engineering "Beyond Traditional Sciences" | 50 Heidelberg U
The Hartmut Hoffmann-Berling International Graduate School of Molecular and Cellular Biology | 72 München LMU zusammen mit München TU*
Munich-Centre for Advanced Photonics |
| 7 Berlin FU
Graduate School of North American Studies | 29 Darmstadt TU
Smart Interfaces: Understanding and Designing Fluid Boundaries | 51 Heidelberg U
Cellular Networks | 73 München LMU
Working Brains - Networking Minds - Living Knowledge |
| 8 Berlin FU
Muslim Cultures and Societies: Unity and Diversity | 30 Dresden TU
International Graduate School for Biomedicine and Bioengineering | 52 Heidelberg U
Asia and Europe in a Global Context: Shifting Asymmetries in Cultural Flows | 74 München TU
International Graduate School of Science and Engineering |
| 9 Berlin FU
Friedrich Schlegel Graduate School of Literary Studies | 31 Dresden TU
From Cells to Tissues to Therapies | 53 Heidelberg U
Heidelberg: Realising the Potential of a Comprehensive University | 75 München TU
Cognition for Technical Systems |
| 10 Berlin FU zusammen mit Berlin HU*
Topoi. The Formation and Transformation of Space and Knowledge in Ancient Civilizations | 32 Erlangen-Nürnberg U
Erlangen Graduate School in Advanced Optical Technologies | 54 Jena U
Jena School for Microbial Communication | 76 München TU zusammen mit München LMU*
Origin and Structure of the Universe |
| 11 Berlin FU
Languages of Emotion | 33 Erlangen-Nürnberg U
Engineering of Advanced Materials - Hierarchical Structure Formation for Functional Devices | 55 Karlsruhe TH
Karlsruhe School of Optics and Photonics | 77 München TU
TUM. The Entrepreneurial University Institutional Strategy to promote Top-Level Research |
| 12 Berlin FU
Freie Universität Berlin - An International Network University | 34 Frankfurt/Main U
Macromolecular Complexes | 56 Karlsruhe TH
Center for Functional Nanostructures | 78 Münster U
Religion and Politics in Pre-Modern and Modern Cultures |
| 13 Berlin HU
Berlin School of Mind and Brain | 35 Frankfurt/Main U
Formation of Normative Orders | 57 Karlsruhe TH
A Concept for the Future of the Universität Karlsruhe (TH) | 79 Saarbrücken U
Saarbrücken Graduate School of Computer Science |
| 14 Berlin HU
Berlin-Brandenburg School for Regenerative Therapies | 36 Freiburg U
Molecular Cell Research in Biology and Medicine | 58 Kiel U
Graduate School for Integrated Studies of Human Development in Landscapes | 80 Saarbrücken U
Multimodal Computing and Interaction |
| 15 Berlin HU
Berlin Graduate School of Social Sciences | 37 Freiburg U
Centre for Biological Signalling Studies - from Analysis to Synthesis | 59 Kiel U
The Future Ocean | 81 Stuttgart U
Graduate School for Advanced Manufacturing Engineering |
| 16 Berlin HU zusammen mit Berlin FU*
NeuroCure: Towards a Better Outcome of Neurological Disorders | 38 Freiburg U
Windows for Research | 60 Kiel U zusammen mit Lübeck U*
Inflammation at Interfaces | 82 Stuttgart U
Simulation Technology |
| 17 Berlin TU
Berlin Mathematical School | 39 Gießen U
International Graduate Centre for the Study of Culture | 61 Köln U
Cellular Stress Responses in Aging-Associated Diseases | 83 Tübingen U
Centre for Integrative Neuroscience |
| 18 Berlin TU
Unifying Concepts in Catalysis | 40 Gießen U zusammen mit Frankfurt/Main U*
Cardio-Pulmonary System | 62 Konstanz U
Konstanz Research School "Chemical Biology" | 84 Ulm U
International Graduate School in Molecular Medicine Ulm |
| 19 Bielefeld U
Bielefeld Graduate School in History and Sociology | 41 Göttingen U
Göttingen Graduate School for Neurosciences and Molecular Biosciences | 63 Konstanz U
Cultural Foundations of Social Integration | 85 Würzburg U
Graduate School for Life Sciences |
| 20 Bielefeld U
Cognitive Interaction Technology | 42 Göttingen U
Microscopy at the Nanometer Range | 64 Konstanz U
Model Konstanz - Towards a Culture of Creativity | |
| 21 Bochum U
Ruhr University Research School | 43 Göttingen U
Göttingen: Tradition - Innovation - Autonomy | 65 Leipzig U
Building with Molecules and Nano-Objects | |
| 22 Bonn U
Bonn Graduate School of Economics | 44 Hamburg U
Integrated Climate System Analysis and Prediction | 66 Lübeck U
Graduate School for Computing in Medicine and Life Sciences | |

*Co-Antragsteller

Abkürzungen:
FU = Freie Universität
HU = Humboldt-Universität
LMU = Ludwig-Maximilians-Universität
MedH = Medizinische Hochschule
TH = Technische Hochschule
TU = Technische Universität
U = Universität